



LE CALME

Caprice

Pour Guitare seule

Composé et Dédié à son Elève

M^{lle} Crabouillet

P A R

FERDINAND SOR

Prix : 4^f. 50.

Clav. 50.

à PARIS, au Magasin de Musique de P. CHATEL, Boulevard des Italiens, N^o 11.
et chez l'Auteur, Rue Favart, 335.

LE CALME.

CAPRICE.

Par

Ferdinand SOR.

Andante.

First musical staff with treble clef, key signature of two sharps (F# and C#), and 3/4 time signature. It contains a sequence of eighth and sixteenth notes with various rests.

Second musical staff, continuing the melody. It includes a fermata over a note with the marking "han." above it. A finger number "3" is written below the staff.

Third musical staff, featuring more complex rhythmic patterns and some beamed sixteenth notes.

Fourth musical staff, showing a continuation of the melodic line with various articulations and rests.

Fifth musical staff, containing several measures with beamed sixteenth notes and rests.

Sixth musical staff, continuing the piece with similar rhythmic and melodic elements.

Seventh musical staff, the final line of music on this page, ending with a fermata.

First musical staff with treble clef, key signature of two sharps (F# and C#), and a 7/8 time signature. It features a complex melodic line with many beamed eighth and sixteenth notes, and a bass line with chords and single notes.

Second musical staff, continuing the piece with similar rhythmic complexity and melodic development.

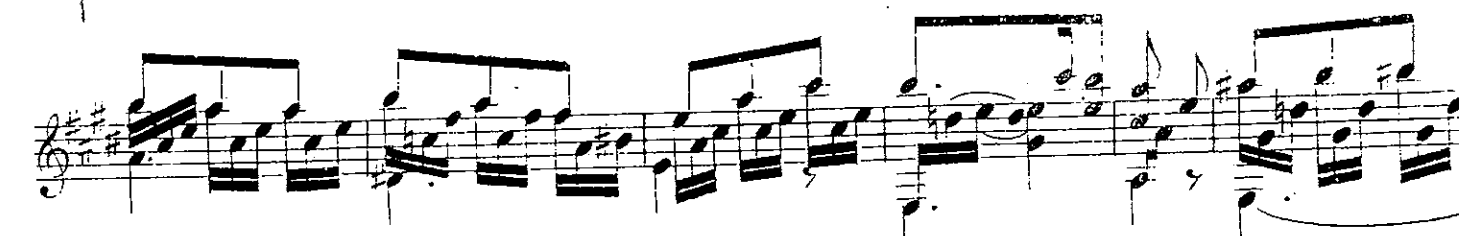
Third musical staff, showing further melodic and harmonic progression.

Fourth musical staff, maintaining the intricate rhythmic patterns.

Fifth musical staff, with a mix of melodic leaps and rhythmic runs.

Sixth musical staff, featuring a prominent melodic line with many beamed notes.

Seventh musical staff, concluding the page with a melodic phrase and a long horizontal line below the staff.



The image shows a page of musical notation with eight staves. The notation includes treble clefs, a key signature of three sharps (F#, C#, G#), and a 3/4 time signature. The music features complex rhythmic patterns with many beamed notes and rests. Performance markings include "cres" (crescendo) and "espes" (possibly "espressivo"). A Roman numeral "VII" is written above the fourth staff. The page number "18" is at the bottom.

harm:

3

harm:

2

harm: