



*à la bonne heure*

SIX VAISES

Pour la Guitare

Composées

*par le bon et précieux maître*

P A R

FERDINAND SOR

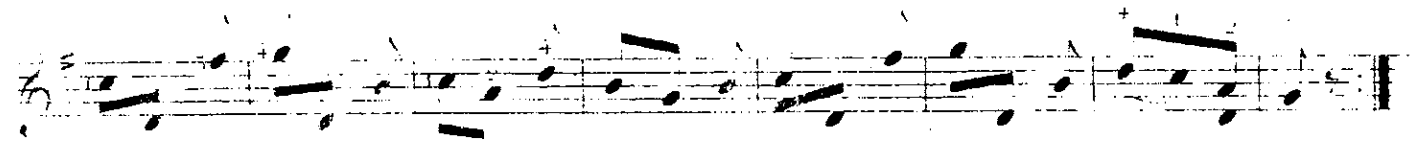
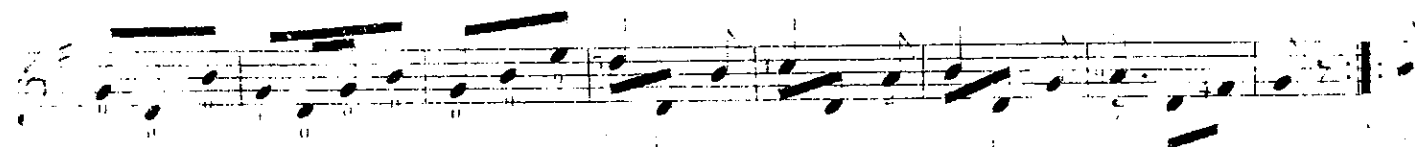
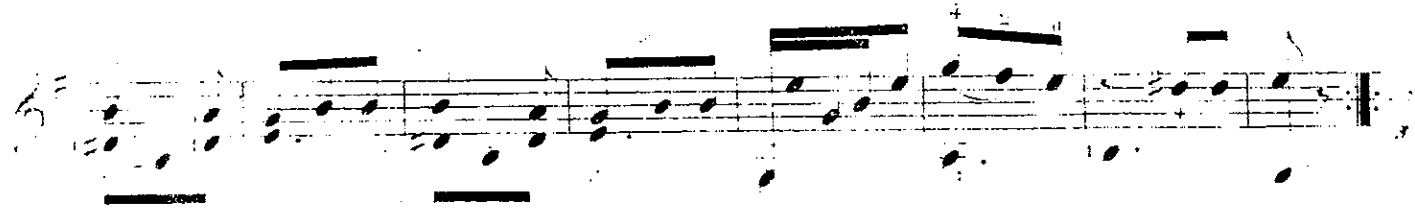
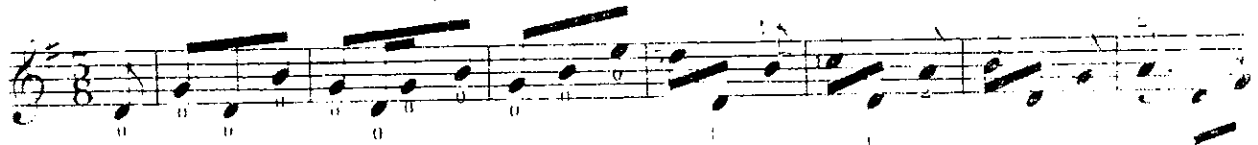
*Paris 1854*

*Op. 51*

SCHUBERTBERGER,

Éditeur, 15, rue de la Harpe, au Palais National, Paris.

Nº 1.



12

1 2 + 1 0 1 4 1 0 4

1 2 4 1 0 1 1 0 +

4 2 4 1 0 + 1 4 4 1 2 7 7 1 4 0 1

1 + 1 0 4 1 7 2 4 1 1 2 1 2 4 1

1 7 1 1 7 1 4 0 2 1 2 7 7 2 4 1

4 2 4 1 0 1 1 0 +

1 2 4 1 0 1 1 0 +

№ 5.

This page of musical notation is for guitar, consisting of eight staves. The music is written in treble clef with a key signature of one sharp (F#) and a 3/8 time signature. The notation includes a variety of rhythmic patterns, such as eighth and sixteenth notes, and rests. Chordal textures are prominent, with many chords indicated by vertical lines and dots. Fingerings are specified with numbers 1-4. Some measures include a '+' sign, possibly indicating a breath mark or a specific articulation. The piece concludes with a double bar line and repeat dots at the end of the eighth staff.

Nº 4.

The image shows a page of musical notation for guitar, consisting of seven staves. The notation includes treble clefs, a key signature of one sharp (F#), and a 3/8 time signature. The music features a complex rhythmic pattern with many beamed eighth and sixteenth notes. Fingering numbers (1-5) are placed above or below notes. Bar lines and repeat signs are used throughout the score.

Nº 5.

The first staff of musical notation is in treble clef with a key signature of one sharp (F#) and a 3/8 time signature. It features a melodic line with several slurs and accents. Above the staff, guitar fret numbers are indicated: 5 1 5 0 2, 1 2 3 1 0, 2 1 4 0, 1 2 1, 5, 1 2 1, and 1 4 1.

The second staff continues the melodic line from the first staff. It includes slurs and accents. Above the staff, guitar fret numbers are indicated: 4, 5, 4, 5, 1, 1, 5 1 2 0 1, and 2.

The third staff continues the melodic line. It includes slurs and accents. Above the staff, guitar fret numbers are indicated: 5, 4, 5, 4, 5, 1, 1, 5, 1 2 0 1, and 2.

The fourth staff continues the melodic line. It includes slurs and accents. Above the staff, guitar fret numbers are indicated: 5, 4, 5, 4, 5, 1, 4, 5, 1, 1, 5, 1 2 0 1, and 2.

The fifth staff continues the melodic line. It includes slurs and accents. Above the staff, guitar fret numbers are indicated: 5, 4, 5, 4, 5, 1, 4, 5, 1, 1, 5, 1 2 0 1, and 2.

The sixth staff continues the melodic line. It includes slurs and accents. Above the staff, guitar fret numbers are indicated: 5, 4, 5, 4, 5, 1, 4, 5, 1, 1, 5, 1 2 0 1, and 2.

The seventh staff continues the melodic line. It includes slurs and accents. Above the staff, guitar fret numbers are indicated: 5, 4, 5, 4, 5, 1, 4, 5, 1, 1, 5, 1 2 0 1, and 2.

196.