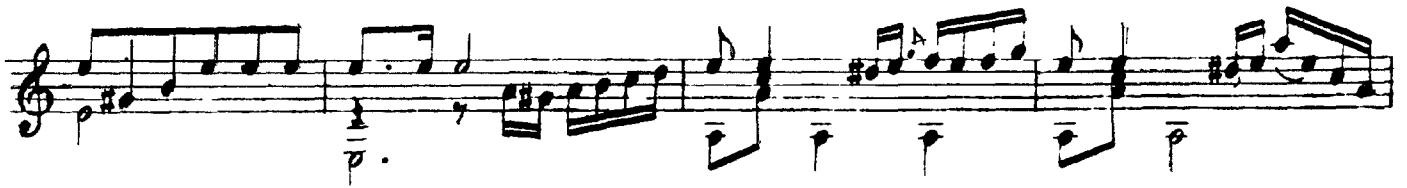
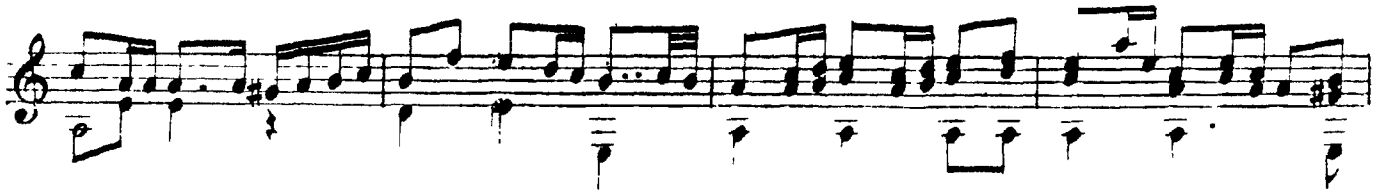
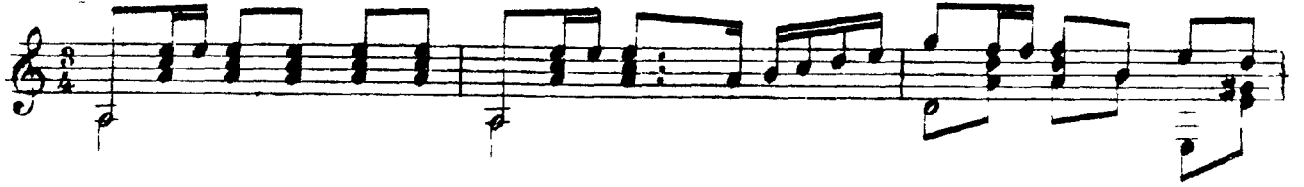


El Postillon de la Rioja

Allegro.



First musical staff, treble clef, key signature of two sharps (F# and C#). The staff contains a complex melodic line with many beamed notes and rests, and a bass line with chords and single notes.

Second musical staff, treble clef, key signature of two sharps. Continues the melodic and harmonic development from the first staff.

Third musical staff, treble clef, key signature of two sharps. Includes the tempo marking *Ca 20.....* above the staff. The music features a mix of eighth and sixteenth notes.

Fourth musical staff, treble clef, key signature of two sharps. The melodic line continues with intricate rhythmic patterns.

Fifth musical staff, treble clef, key signature of two sharps. Shows further development of the musical themes.

Sixth musical staff, treble clef, key signature of two sharps. The bass line becomes more active with frequent chord changes.

Seventh musical staff, treble clef, key signature of two sharps. The melodic line features a series of ascending and descending eighth notes.

Eighth musical staff, treble clef, key signature of two sharps. The piece concludes with sustained chords in the bass and a final melodic phrase.