

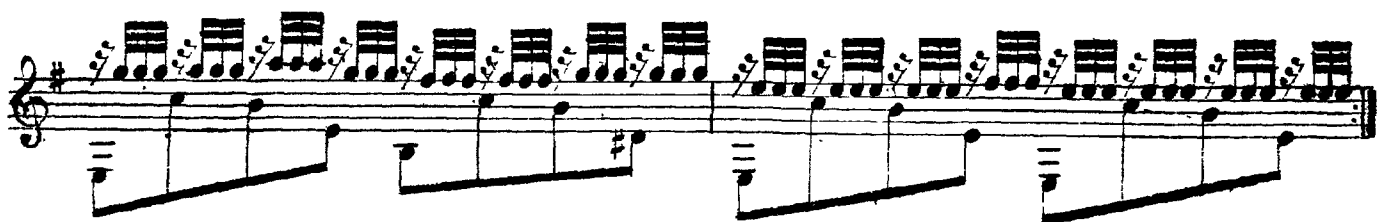
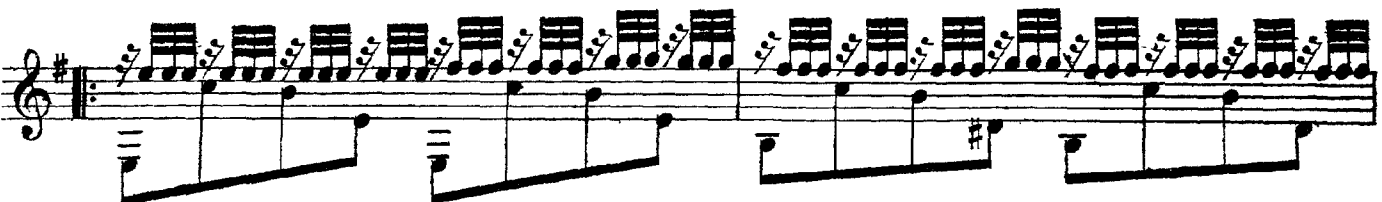
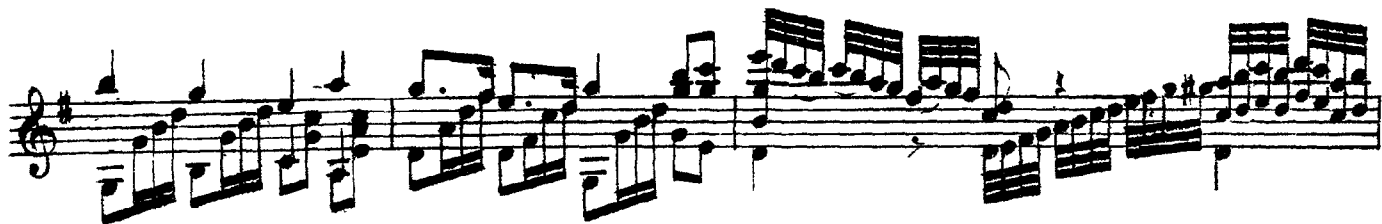
# Marcha Funebre de Thalberg

Tempo di Marcha.

The image displays a musical score for the piece "Marcha Funebre de Thalberg" by Thalberg. The score is written for a piano and consists of ten staves. The key signature is one sharp (F#), and the tempo is marked "Tempo di Marcha." The notation includes a variety of rhythmic values, including eighth and sixteenth notes, as well as rests. There are several instances of "arm. 12" (armatura 12) written above the staves, indicating specific fingering or articulation points. The music is characterized by a steady, march-like rhythm with a somber and dignified character.

arm.  
12

This image shows a page of musical notation for a piano piece. The music is written on eight staves, each beginning with a treble clef and a key signature of one sharp (F#). The tempo is marked 'arm.' (allegretto) with a metronome marking of 12. The notation is dense, featuring many beamed notes and rests, creating a complex, multi-layered texture. The final staff concludes with a double bar line and a fermata.



arm. arm. arm. arm.

12 7 12 7 12 7 12 7

12 7 12 7 12 7 12 7