

Boleras

Allegro Moderato.

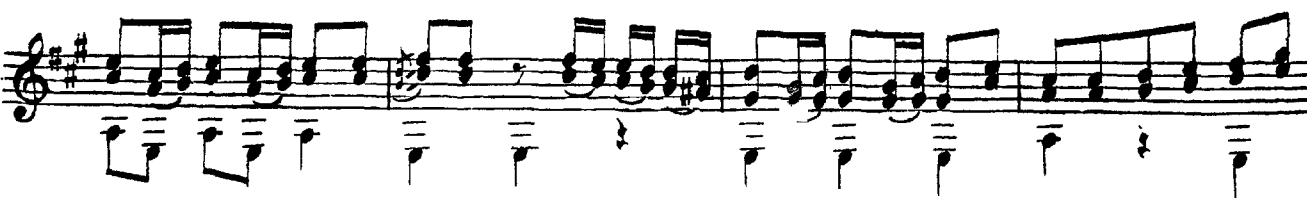
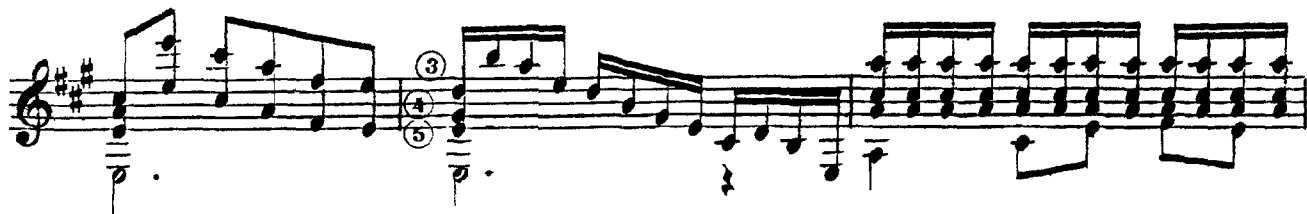


C^a 1^a

C^a 2^a.....



C^a 2^a



Ca 2º

First musical staff with treble clef, key signature of two sharps (F# and C#), and a 7/8 time signature. It features a complex rhythmic pattern with triplets and sixteenth notes.

Ca 2º

Second musical staff, continuing the rhythmic and melodic patterns from the first staff.

Ca 4º.....Ca 2º

Third musical staff, showing a change in dynamics and rhythmic complexity.

Ca 9º.....

Fourth musical staff, featuring dynamic markings *ff* and *p*.

Ca 2º

Fifth musical staff, including a measure with a fermata and the marking *ar* (arpeggiato).

Ca 4º.....Ca 2º.....Ca 2º

Sixth musical staff, continuing the melodic and rhythmic development.

Ca 9º.....

Seventh musical staff, featuring dynamic markings *ff* and *p*.

Eighth musical staff, concluding the page with dynamic markings *p*, *ar*, and *ff*.